



Step 1: Connect the DVR to your Router

Step 2: Login to DVR, go to main menu, info, version

First, please make sure that the DVR is connected to our server (Similar like below)

(if it doesn't shows "connected", please go back to main menu, system, network. Please make sure that the DHCP is enabled)

Nat status	Connected
Nat status code	2:220.231.192.70

After that, copy down the serial number

It must have 16 digits

MAC	001000017633
SerialNo	fabffa9d1763xxx

Step 3: connect with CMS software

Download and Install the CMS software from the link below

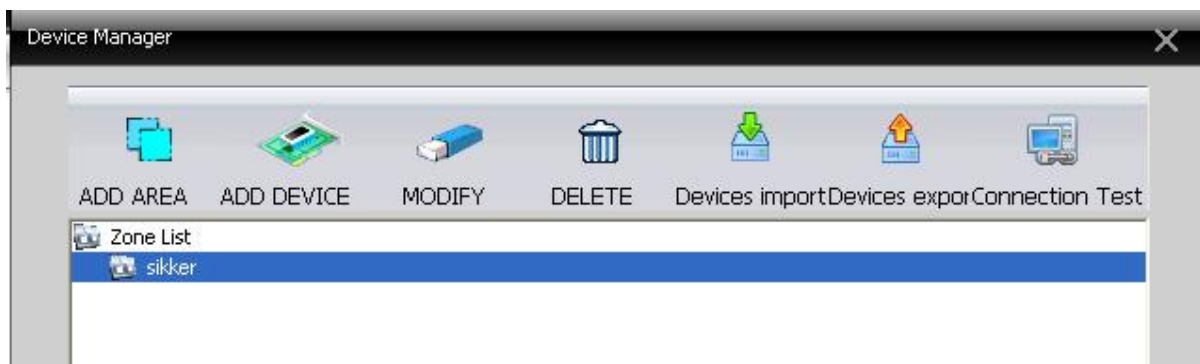
<http://www.sikkercctv.com/files/CMS.zip>

Start the program and it will ask username password. Just leave it username: super and no password and click Login.

On right hand side, click system and select device manager

Click add area, put any name in zone list (example: sikker) and click ok

Then, you have to select the zone (see picture below) and click add device.



Edit

NO.	IP Address	Port	MAC	Vendor
-----	------------	------	-----	--------

IP Search Add Device EditDevice

Device Name

LoginType ☐ IP Address ☐ Domain ☐ ARSP ☒ Cloud

Serial ID

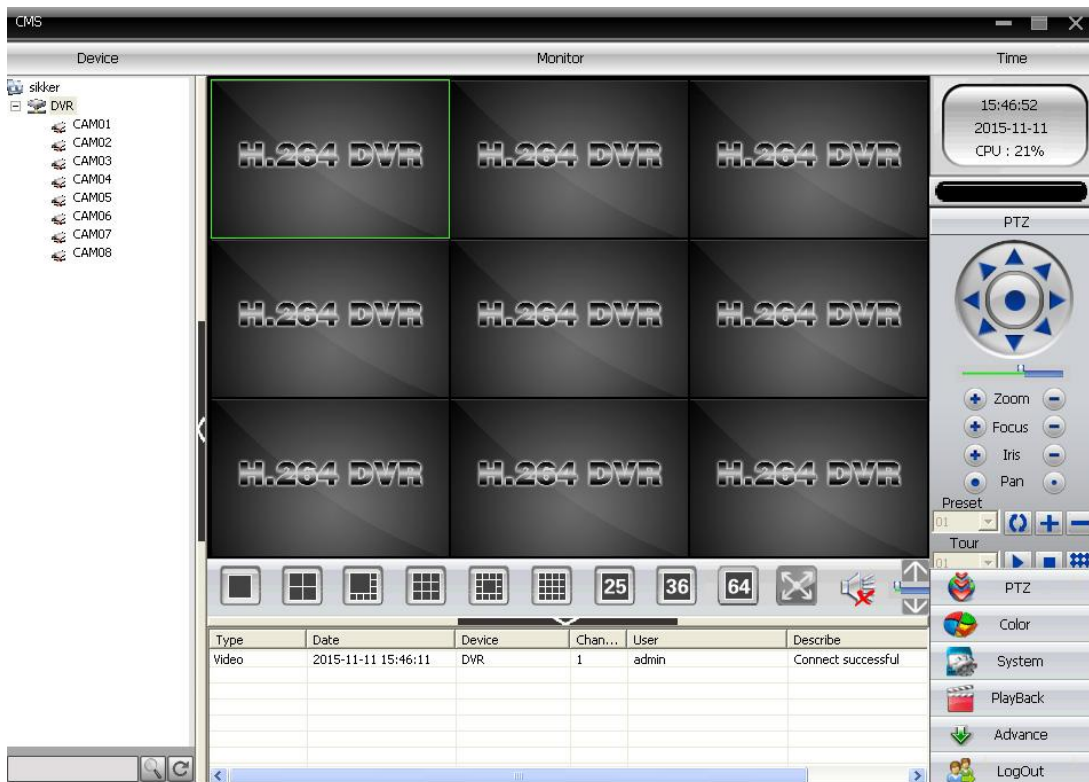
User Name Password

Zone

Vendor

OK Cancel

- Device name: Fill out any name you want
- Login Type: select Cloud
- Serial ID: enter the DVR 16 digit serial number
- User Name: admin
- Password: Default is no password, just leave it blank. If you set the password in the DVR, you have to fill out the DVR admin password. And click ok.

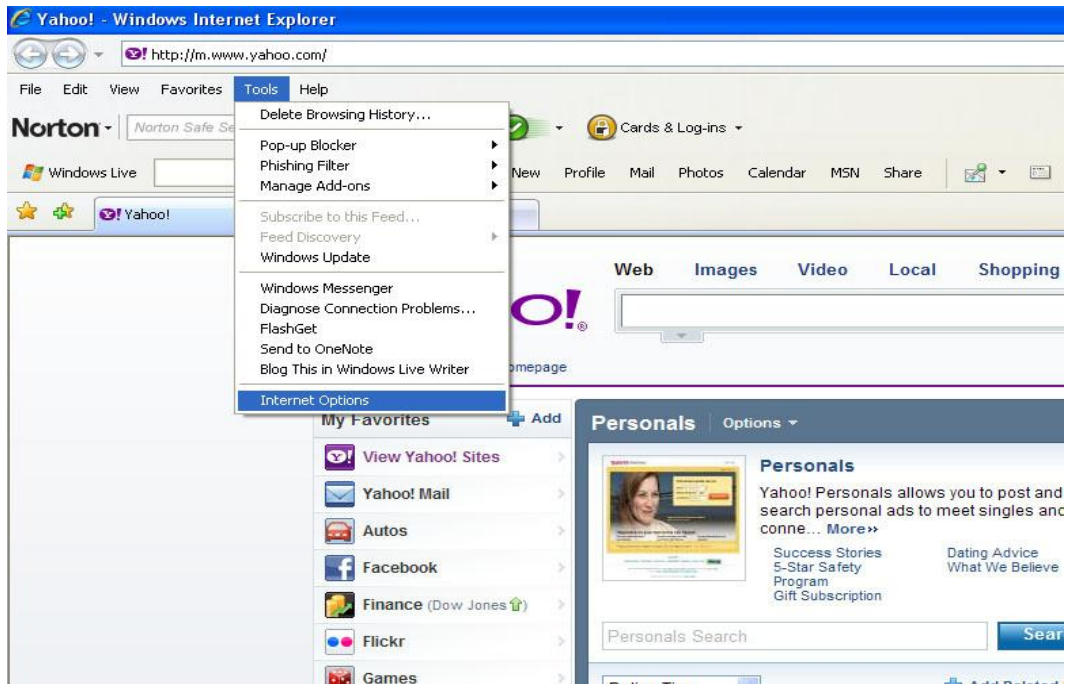


You will see the device you just add on left hand side. Double click it and you will see cam name right under it. If you right click on the device name, you can select connect all video main stream.

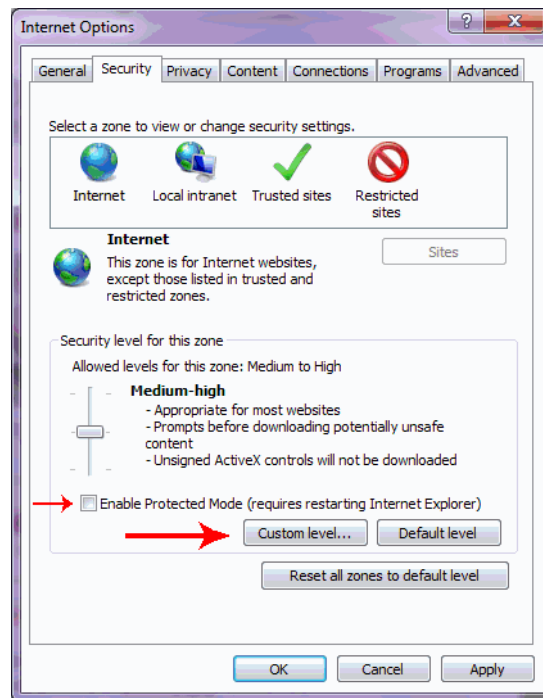
Step 4: Connect by Internet Explorer

Internet explorer configuration

- Open the Internet Explorer browser (must be 6.0 or higher).
- Go to Tools, Internet Options :

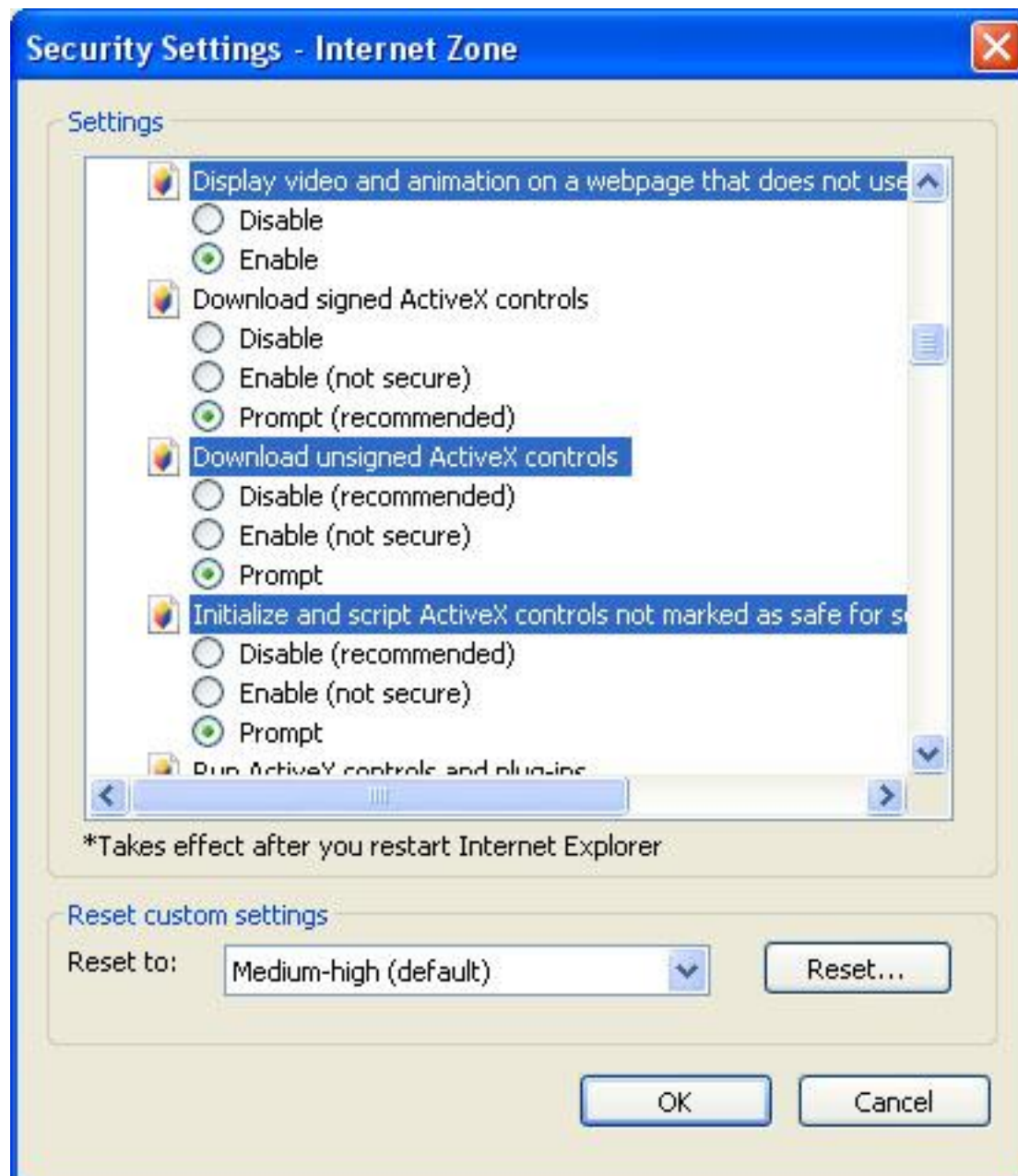


- Go to Security
- Uncheck “enable Protected Mode” (I.E. 7 or 6 don’t have this section)
- Then, go to “Custom Level”



Ensure these security settings are ENABLE or PROMPT:

- Enable: Display video Animation on a webpage that does not use external media player
- Prompt: Download unsigned ActiveX Control
- Prompt: Initialize and script ActiveX controls not marked as safe for scripting




- then Click OK -> Apply -> OK


Go to the website www.sikkercctv.com




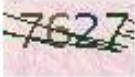
After Click Remote viewing Login, It will go to the login page.

Click to change to by device → By Device

 fabfffa9d1763xxx
(The serial number you copy down)

 admin (DVR username default : admin)


 (DVR Password default : no password)

7627 (match this Pic) → 

Login and Orewiev

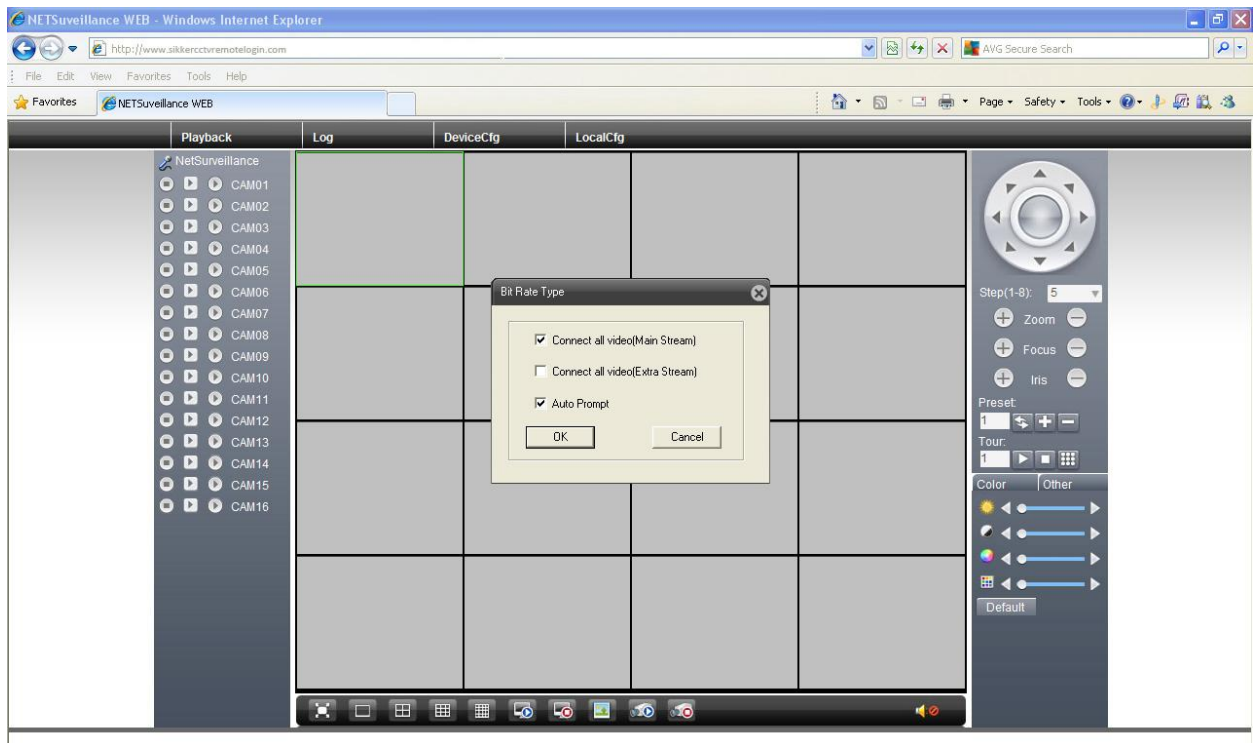
Please Click "Enter Guide" if you visit first

Register



it will ask you to download the ActiveX control. Please click run, agree to install and Yes to complete the installation.

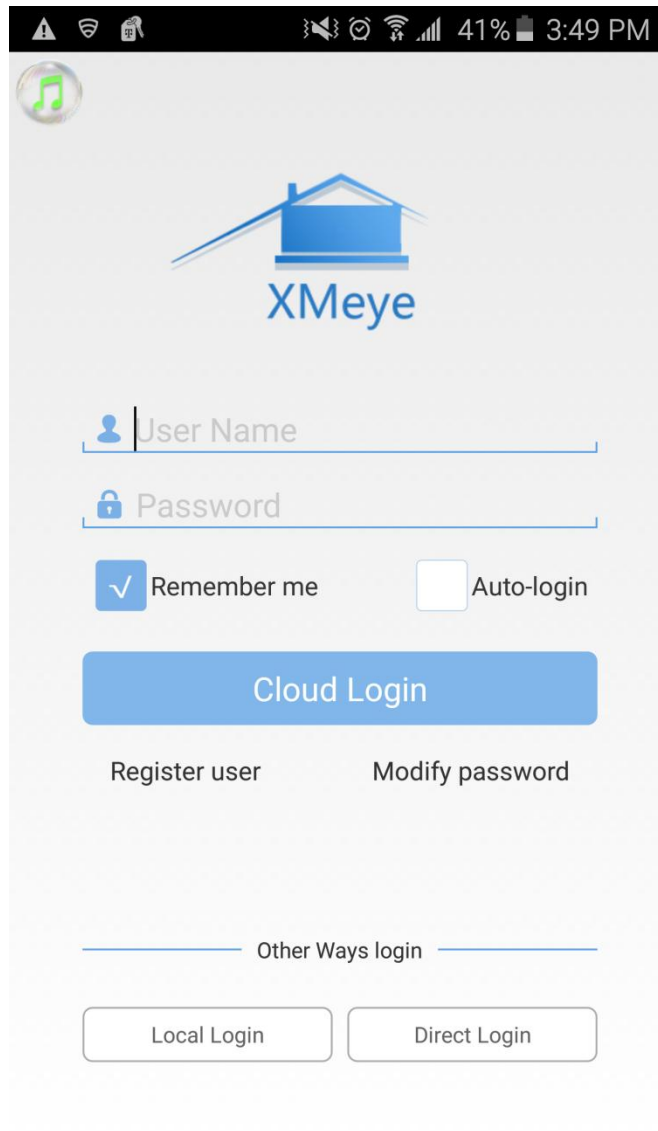
Then , It will transfer to the page (like below) which you successfully Login.

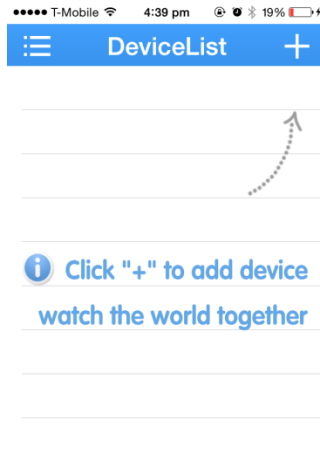


Step 5: Cell Phone monitoring

Please download the app **XMEYE** in your i-phone or Android

1) in the app, please choose “Local Login”





2) Press “+” on Top to add device

- a. You can fill out any Device Name
- b. Serial Number : enter your DVR Serial #
- c. User Name : User name of the DVR (default : admin)
- d. Password : password of the DVR (default , no password)
- e. Click “OK”

3) Click the device you just added and click the cam number

4) At the bottom of the screen, you can move it left, right to change page. In the last page, you can change to view 4,8 or 16 at the same time

