

A) Connect the DVR to router by Ethernet cable



B) On top of the DVR, you will find a label like below:



**Username:** admin (some new model can't use admin as user so we put "sikker" as username. Please check the DVR's label)

**Password:** we will put buyer shipping address 5 digit zip codes (such as "91802") as the password or states short form with 5 digit zip codes (such as "ca91802")

You need this password to login to DVR main menu and also login remotely by cell phone or computer.

**Serial number:** You can manually add the serial number in the cell phone app or scan the QR code. The serial number can also find under DVR's main menu, "info" section, "version" page.

## C) Login with smart phone or tablet:

Step 1: Download the app “**XMEYE**” in your cell phone

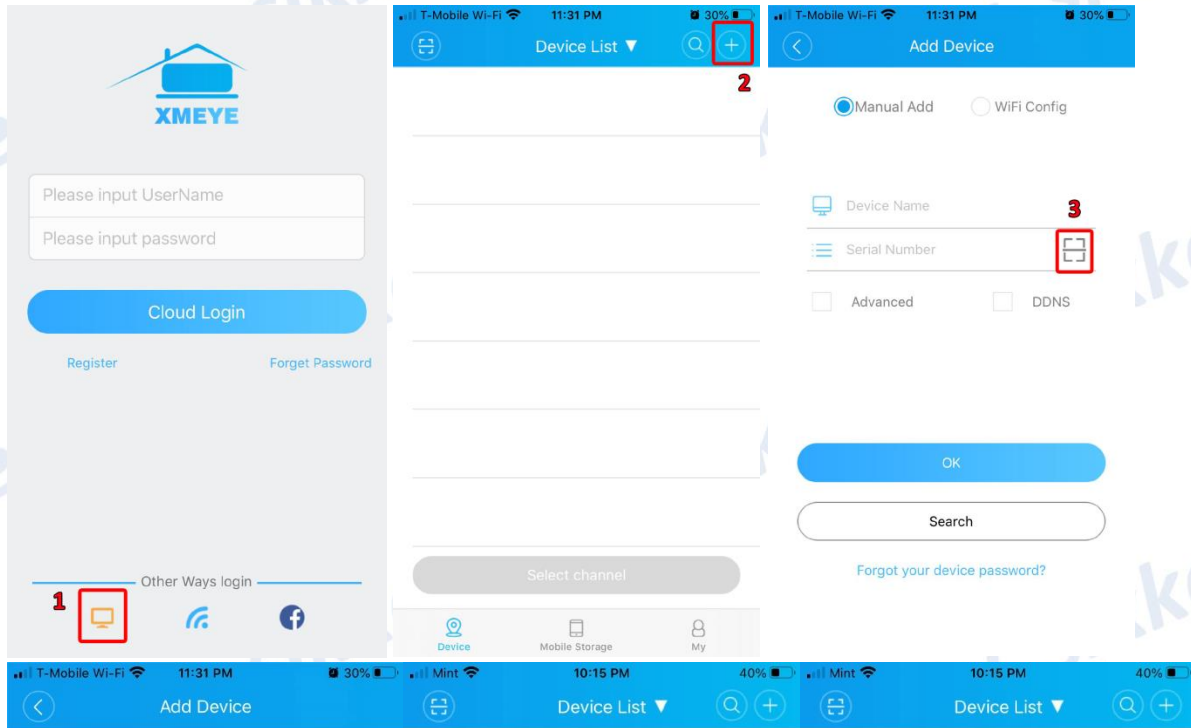
Buyer can go to app store or google play store to search the app “**XMEYE**”.



Or scan the QR code below to download the app.



**Step 2a: If you don't need to receive instant push notification, you don't need to register. Open the App & follow the picture below.**



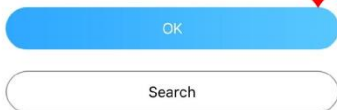
**On top of the DVR, you can find the DVR's serial number label**

**Click "scan" Button above and scan the DVR's serial number QR code.**

**Then, press "OK" below**

**Press the serial number and the login menu come out.  
username : admin  
Password : Put in the DVR's login password. Normally, your shipping address 5 digit zip code.**

**press any cam number and it will load the live picture**

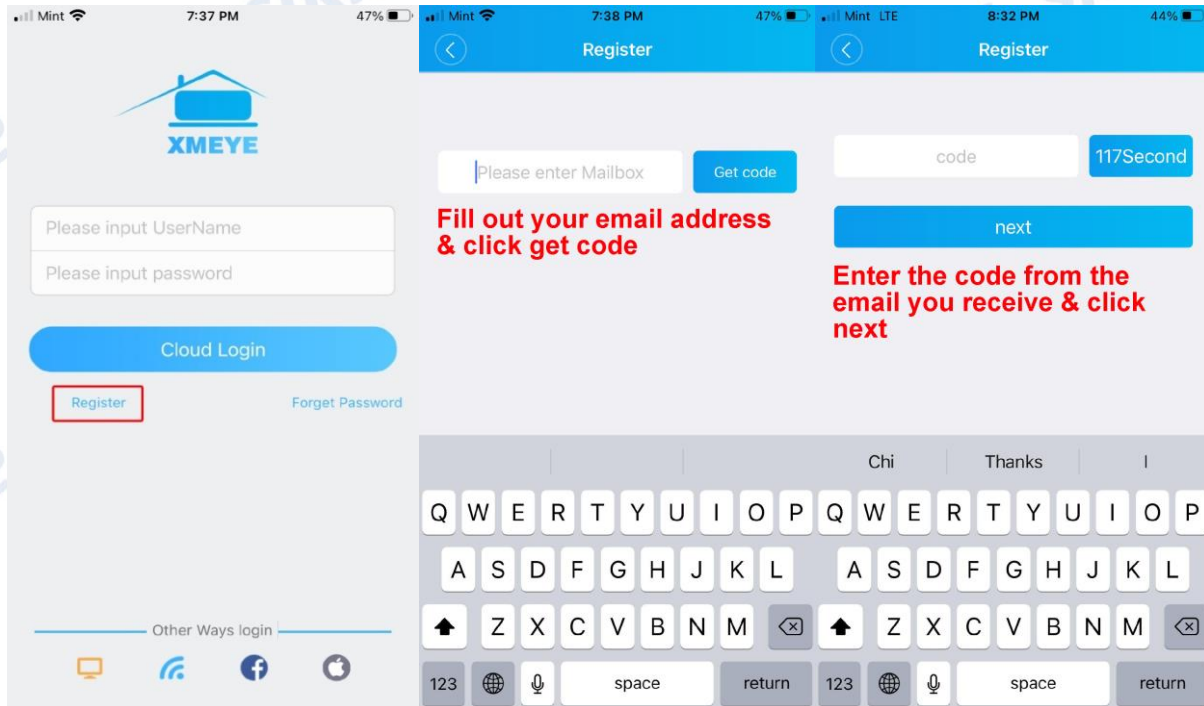


Select channel

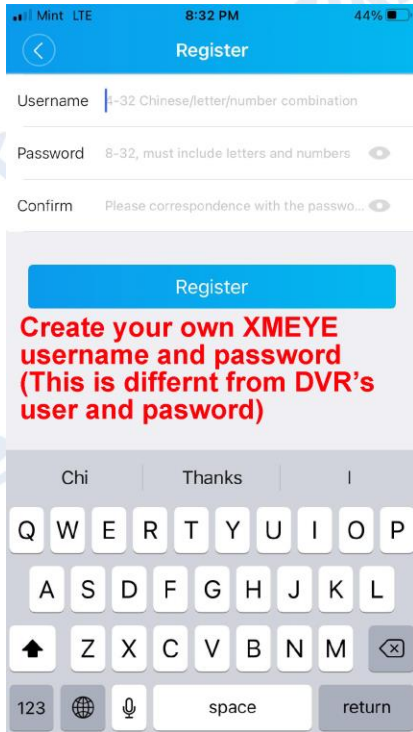
Select channel



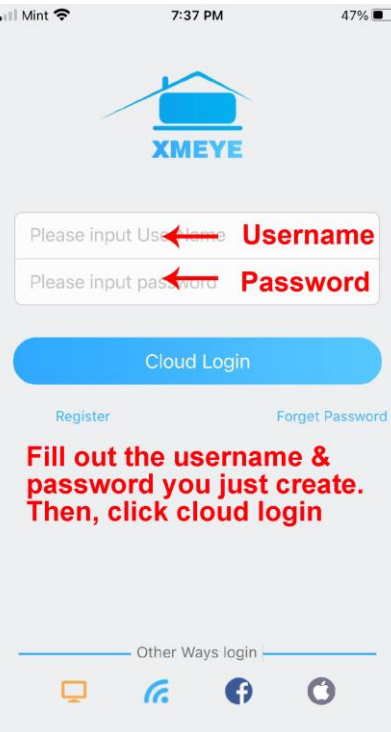
**Step 2b: If you want to receive instant push notification, you need to register. Open the App & follow the picture below.**



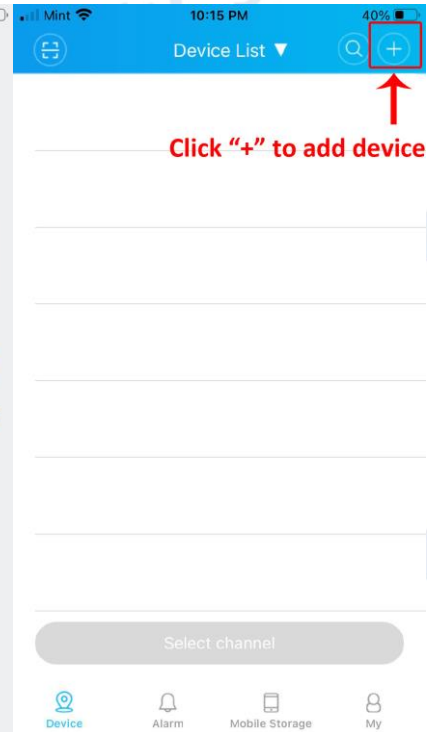




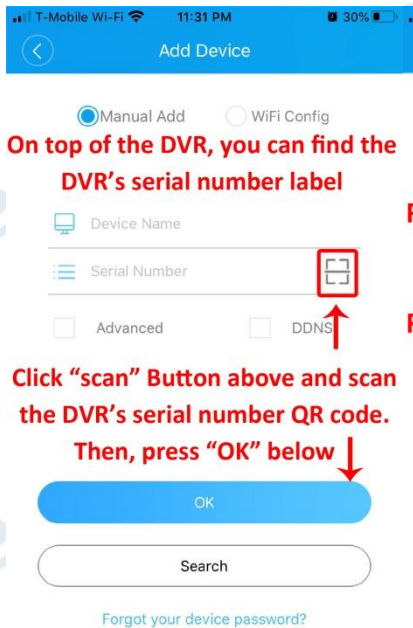
**Create your own XMEYE username and password (This is different from DVR's user and password)**



**Fill out the username & password you just create. Then, click cloud login**

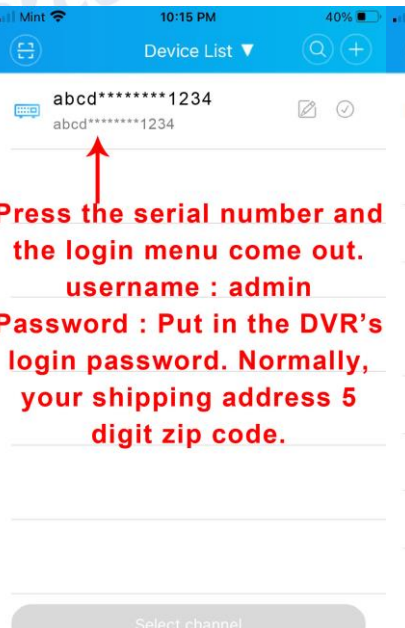


**Click "+" to add device**

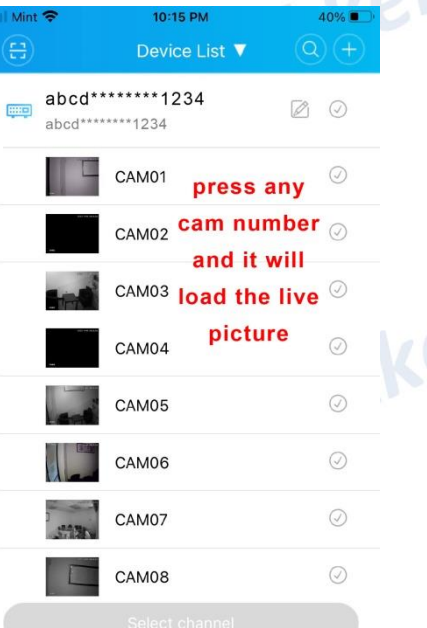


**On top of the DVR, you can find the DVR's serial number label**

**Click "scan" Button above and scan the DVR's serial number QR code. Then, press "OK" below**



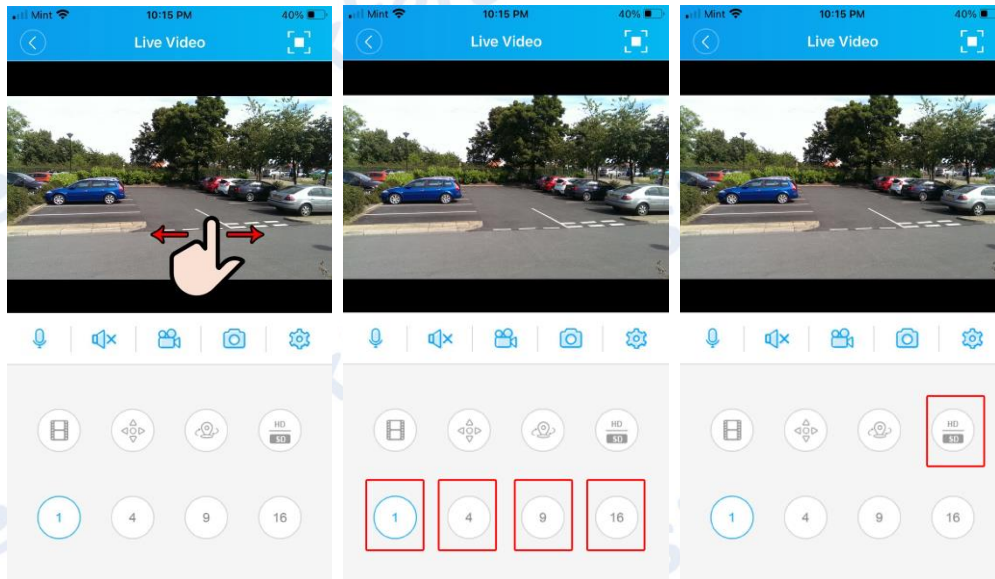
**Press the serial number and the login menu come out. username : admin Password : Put in the DVR's login password. Normally, your shipping address 5 digit zip code.**



**press any cam number and it will load the live picture**

### Step 3: Live view, Playback & Backup

- 1) Slide the picture left or right will change to different channel
- 2) Press "1" "4" "9" "16" can view 1/4/9/16 at once
- 3) Press "HD/SD" can switch to High definition resolution



**Live**



**Playback**



**Backup**



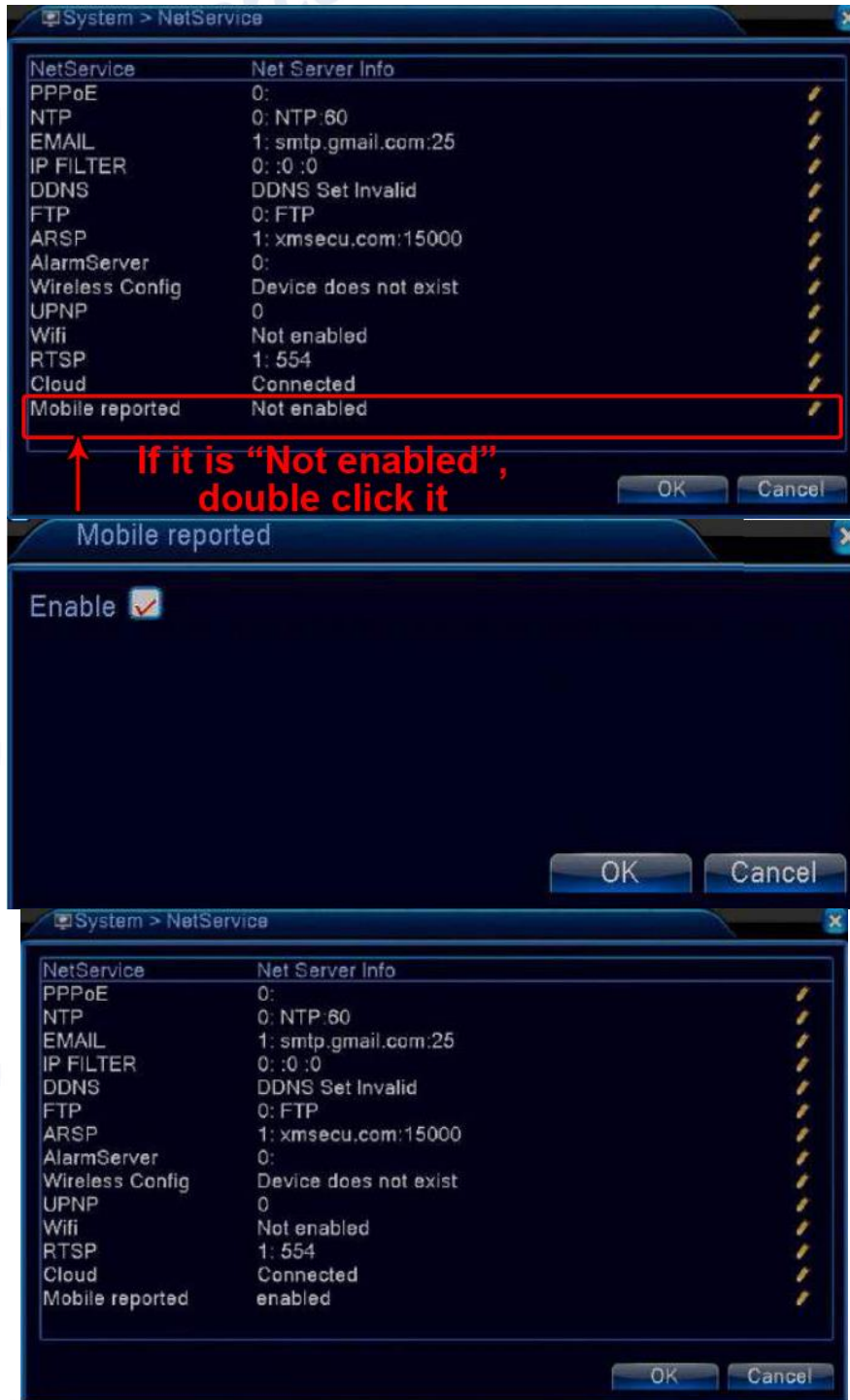
- \*Live view can support up to 16 cam at the same time
- \*click button to record live video in your phone
- \*Click button to go to playback

- \*At the bottom, select the date
- \*Move the time scale to play the video you need
- \*Press with up to 8x fastforward

- \*During playback, press button to save the video
- \*Under device list, you can find the backup video under mobile storage

## Step 4: Push Notification

A) DVR Setting: Go to DVR main menu > "System" Section > "NetService" page > Mobile Reported





## B) Setup DVR's Motion Detect or Human Detect function:



Login to DVR main menu > “Alarm” section > “Motion Detect” or “Human detect” page

(Depends on DVR model, some model doesn't have “human detect” function)

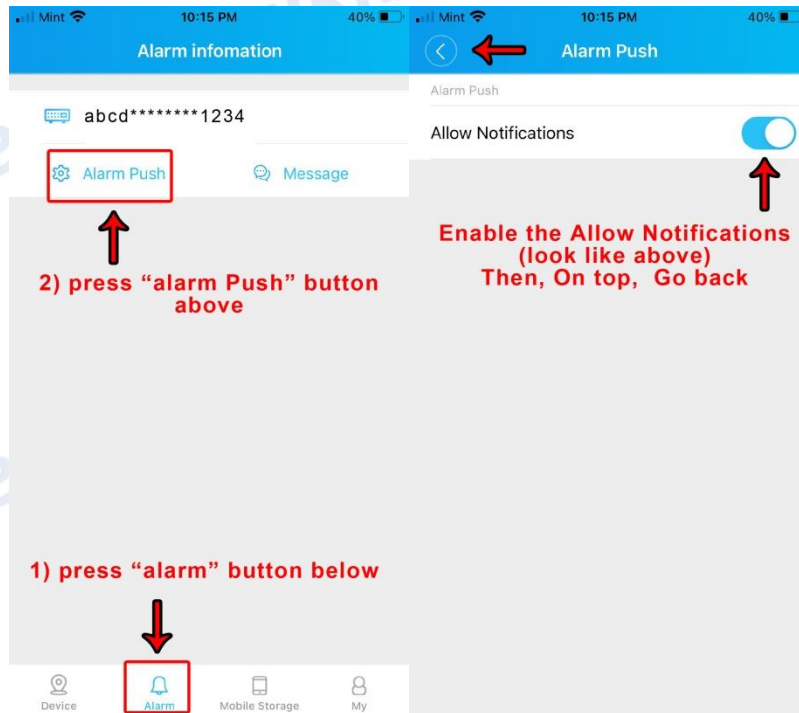
In this page, you have to setup one channel by one channel. After click “OK”, the setting will save in the memory

- 1) Select the channel you want to receive motion alert. For example, Channel “1”
- 2) Click enable
- 3) Sensitivity: change to higher or lower depends on the traffic
- 4) Region: Pink or Blue color box is “DETECT” zone. After you clear the box, it is “undetected” zone.
- 5) Mobile Reported: enable it.



### C) Setup Xmeye push notification alert:

- 1) Open the app "XMEYE"
- 2) Enter your "xmeye" app username & password (please see Section 2B above), then press cloud login
- 3) Press "alarm" button at the bottom and then press "alarm push"
- 4) Slide the "allow Notifications" to enable it. Then click go back.



- 5) Then, you will receive the notification like below

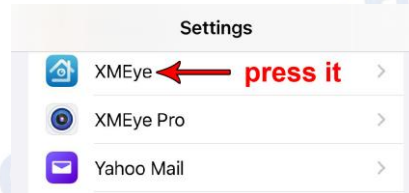


## Troubleshooting:

- a) Please try to connect any channel live view and make sure the DVR is online



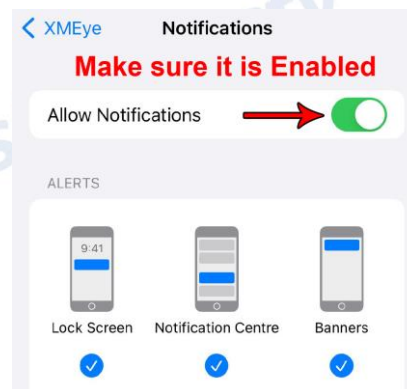
- b) Go to **CELL PHONE** settings page;



- c) Go to app "xmeye" setting.



- d) Go to "Notifications" section.



- e) Make sure "Allow Notification" is enabled.

## D) Login with Windows computer:

Download and Install the CMS software from the link below

<http://www.sikkercctv.com/files/CMS.zip>

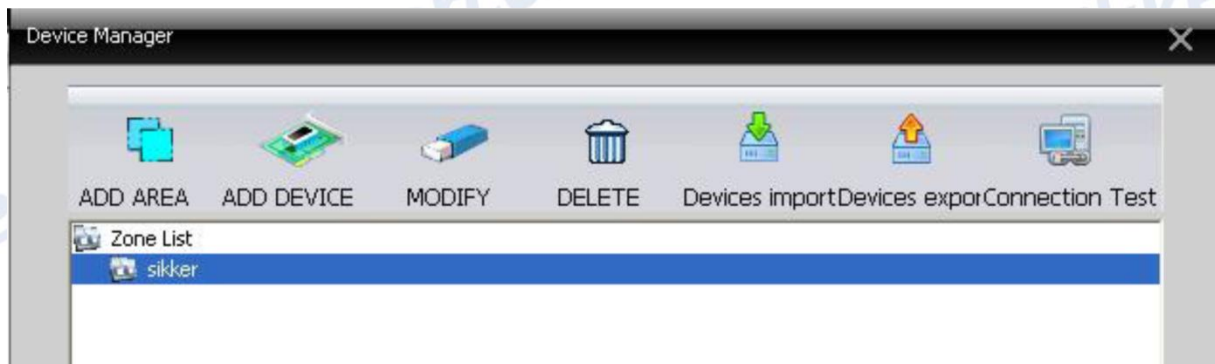
Start the program and it will ask the **CMS program** username password.

Username: super

Leave password blank (no password)

And click Login.

On right hand side, click "system" and select "device manager"



Click "add area", put any name in zone list (example: sikker) and click ok

Then, you have to select the zone name (sikker)

(See picture above)

And click add device.



Dialog box titled "Edit" with a close button (X) in the top right corner. The dialog contains a table with the following columns: NO., IP Address, Port, MAC, Vendor. Below the table are three buttons: IP Search, Add Device, and EditDevice. The form fields are as follows:

- Device Name: DVR
- LoginType:  IP Address,  Domain,  ARSP,  Cloud
- Serial ID: fabffa9d1763xxx
- User Name: admin, Password: [empty]
- Zone: sikker
- Vendor: H264DVR

At the bottom of the dialog are two buttons: OK and Cancel.

a. Device name: Fill out any name you want (such as DVR)

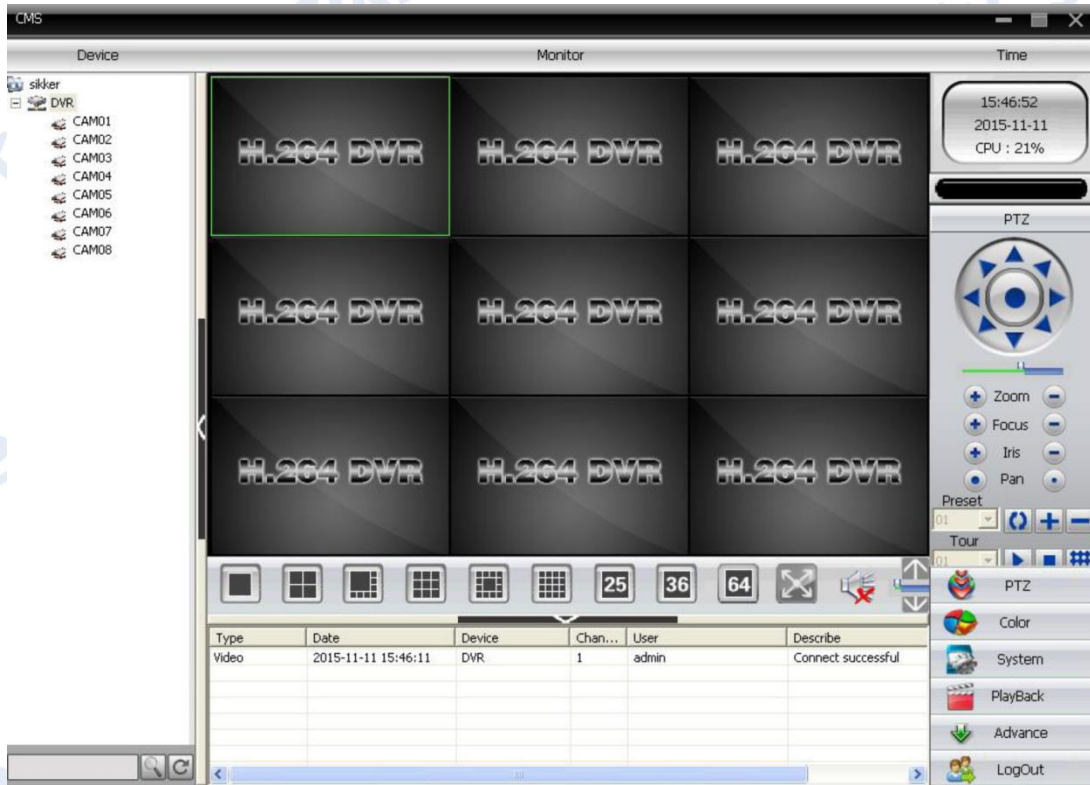
b. Login Type: select Cloud

c. Serial ID: enter the DVR 16 digit serial number (you can find the label on top of the DVR)

d. User Name: admin

e. Password: if you didn't change the default password, please put your shipping address zip code

Click ok



You will see the device (DVR) you just add on left hand side.

Double click it and you will see cam name right under it.

After you see the cam number, you can right click on the device name (DVR) and select connect all video main stream